

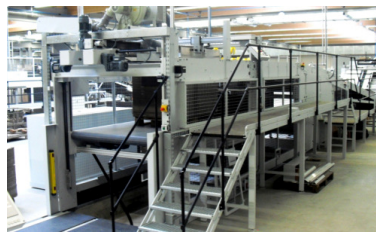


About us

Stock Maschinenbau develops and manufactures machines for the economical production of packaging and advertising materials. Since the company was founded in 1970 Stock Maschinenbau has developed into one of the leading manufacturers and specialists for laminating machines etc.. 85 qualified employees, as well as the capacity of two locations in Germany guarantee a sound technological know-how, as well as a high production flexibility.

We offer a versatile program market- and customer-specific products, also for individual requirements. Our modular machine systems enable our customers to demand-oriented planning. To keep investment manageable, we have to start new lines smaller production facilities can be expanded smoothly with increasing workload. One example is manual or semi-auto laminating machine that can be automated later.

In addition to our "standard equipment" is the development and construction of special solutions a focal point of our activities.



The term "Made in Germany" applies to our products in its positive meaning. Durable, sturdy and economical to guarantee you a good investment.

Our range of services is aligned holistically. We advise our clients in the planning stage, accompany the start-up of the machine and provide a reliable after-sales service.

Laminating machines for high performance

Combining offset printed sheets with corrugated or solid board still represents the highest quality level of high-quality packaging and displays. Our years of experience in the development of powerful machines assures the user a high quality and production standards.

Roller Inline Laminator, Type SRS-7-R

Suitable for laminating sheets of one-sided shaft with offset printed cardboard sheet of approximately 230 g / m² with high performance and good accuracy. Due to the automatic format setting, this machine is suitable for short runs and long runs



The glue rollers are easily cleaned within 5 minutes. Therefore only water is needed. In addition, it is equipped with the 'on-the-Fly' mode, that is, that there is no mechanical alignment of the sheet leading edge is required. Over the print sheet is aligned by a special page mark. The printed sheets are detected optically and electronically adjusted.

Available Options:

- Roll to roll: the lamination of pre-printed paper roll
- Carrier sheet feeder for sheet-sheet lamination
- Unwinding of paper rolls - roll to roll lamination
- Unwinding for unwinding the single-faced corrugated by rolling
- Dispensers and applications for 4 tear-off threads (rolls)
- BP Agnati Single Facer (Master) for in-line production

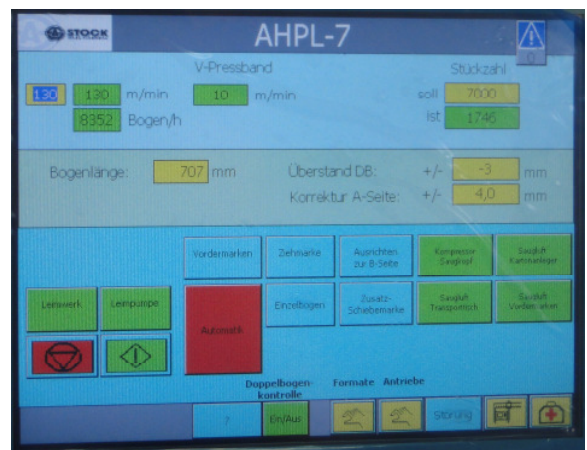
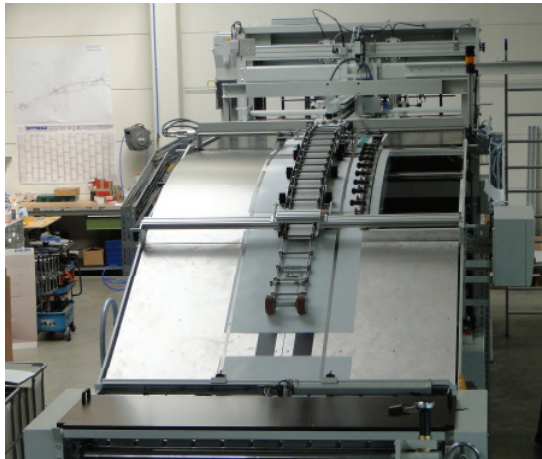
Services:

- Up to 12,000 sheets per hour.
- Max. mechanical speed: 220m

Sheet-to-Sheet laminating machine, model AHPL

The newly designed, automatic laminating machine is suitable for laminating display with high Kaschiergenauigkeit, as well as sheets of an open shaft.

The machine is easy with water and quickly to clean. With high speed operation 'HP' are turned all the functions for mechanical sheet alignment. The leading edge of carrier and printed sheets are detected optically and electronically adjusted. The 'HP' mode is 230 g / m², offset-printed suitable, since a high laminating accuracy is not required in particular for single-sided lamination of corrugated board with an open carton.



Output:

- In 'A mode' to 3,700 sheets / hour
- In 'HP Mode' to 10,000 sheets / hour

automatic laminator, suitable for edge / register accurate laminating of displays and short-run with good performance. Suitable for carrier sheets from one or two sides covered corrugated board up about 7 mm thickness (double-double), as well as paper and cardboard, with cover sheet of paper and paperboard.

Machine configuration: automatic system of the carrier and print sheet automatic sheet delivery.

Output in 'accuracy' mode to max. 3,700 sheets / hour, depending on the sheet length.

Provided with an additional 2nd mode - '(HP) / Pass mode - is the output to max. 10,000 sheets per hour, depending on the sheet length, with good accuracy.

Combined with the 'HP-mode' is the engine, in particular for laminating POS Displays high accuracy, as well as for open corrugated cardboard - folding boxes with high performance - suitable. With the 'HP' mode are benefits to 10,000 sheets / hour, depending on the sheet length, possible.

Sheet-to-sheet laminating machine, Model SLOTF

The newly designed, automatic laminating machine is suitable for laminating folding boxes with high speed laminating, as well as sheets of an open shaft. Efficient and low-cost high speed laminator for large runs, specially designed for folding carton manufacturers.

The machine is easy and fast to clean with water. In high power continuous operation - mode "On-The-Fly" the leading edge of carrier and printed sheets are detected optically and electronically adjusted. This mode is 230 g / m², offset printed suitable because a high laminating accuracy is not required in particular for single-sided lamination of open corrugated cardboard with.



Performance:

in the 'On-The-Fly Mode' up-to 10,000 sheets / hour
automatic laminator suitable for laminating carrier sheets from one or two sides covered corrugated board up about 7 mm thickness (double-double), with cover sheets from 230 g / m² cardboard.

Possible machine configuration:

- automatic sheet feeder carrier 4Ro with vacuum roll feeder
- automatic sheet feeder carrier 4Ro with vacuum roll feeder and pre-feeder
- automatic Bute stream feeder for printing sheets
- electronic sheet alignment of the support and signatures
- press belt 4 m Press length
- automatic sheet delivery through non-stop pile offshoot (downstacker)
- bundle turnover (flip-flop) for stacking folded
- performance in continuous mode up to max. 10,000 sheets per hour, depends on the sheet length.

Semi-automatic Sheet-to-Sheet laminating machine, model A-Machine

semi-automatic laminating machine A - 134R5 with high accuracy, suitable for laminating Displays & Packaging, Puzzle made of corrugated cardboard, cardboard & cardboard



semi-automatic laminating machine, designed for semi-automatic laminating offset printed sheets, with a wide range of different carrier sheet. Used to produce high-quality, sales-promoting displays and packaging.

High profitability and manageable investment costs are distinguished from the machine. The developed machine configuration suitable for both newcomers as well as for expanding existing production.

Essentially consisting of:

- suction belt feeder: for substrate material backing sheet, suitable for non-stop operation
- manual sheet feed: manual single sheet feeder for sheet
- laminating: for gluing, aligning and accurately fitting together laminating the sheet
- manual sheet delivery: hand delivery, using a simple table, possible.



Technical specifications:

- working widths: 1,250 / 1,500 / 1.650 / 2,050 mm
- arc lengths: 1,640 / 2,050 mm
- tolerances: +/- 0.5 mm
- operation: 2 (to 3) persons
- services: depending on the format size, in particular arch length and caliber strength, material quality (grammage, flatness), and machine status. for model A-134R5 up to max. 1,700 sheets / hour.

Automatic Sheet-to-Sheet laminating machine, model A-Machine

Automatic sheet - laminator A - 14V567A

High laminating accuracy, suitable for laminating Displays & Packaging, Puzzle made of corrugated cardboard, cardboard & cardboard

Automatic sheet-laminating machine, designed for fully automatic laminating offset printed sheets, with a wide range of different carrier sheet. Used to produce high-quality, sales-promoting displays and packaging.

High profitability and manageable investment costs are distinguished from the machine. The developed machine configuration suitable for both newcomers as well as for expanding existing production.





Essentially consisting of:

- automatic front edge pallet feeder for carrying sheet
- automatic sheet feeder for printed sheets
- laminating: for gluing, aligning and accurately fitting together laminating the sheet
- automatic Stacker: Stacker without automatic non-stop device

Technical specifications:

- working widths: 1,250 / 1,500 / 1.650 / 2,050 mm
- sheet lengths: 1,640 / 2,050 mm
- tolerances: +/- 0.5 mm
- operation: 2 (to 3) persons
- services: depending on the format size, in particular arch length and caliber, material characteristics (grammage, flatness), and machine status.
for model A-14V567A up to max. 3,500 sheets / hour.

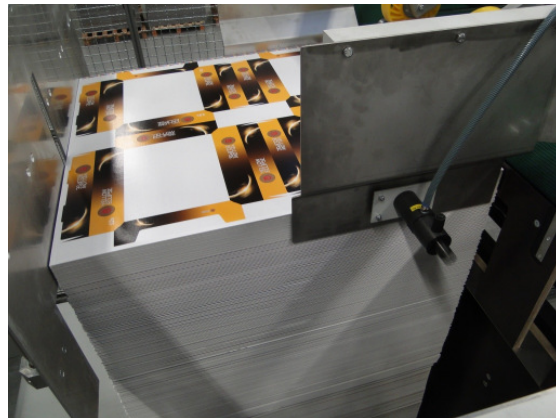
Sheet-to-Sheet laminating machine, model S-machine

semi-automatic or automatic machine for laminating carrier sheets with offset printed cover sheets of paper and paperboard with a accuracy of approx. ± 1.5 mm. Equipped with an automatic sheet feeder for substrate material & manual printed sheet feeding (semi-automatic), automatic sheet feeder for substrate material & manual printed sheet feeding, and a semi-automatic sheet delivery without turner. Sheet infeed during semi-automatic carried out as a single sheet (manual). Scaled print sheet running into the laminating machine at the machine. Capacity up to 2,000 sheets per hour (semi-automatic) or 8,000 sheets per hour - with 2 persons.

Suitable for laminating open & closed corrugated cardboard to 7 mm thickness (BC-wave), as well as cardboard and cardboard of about 0.8 to 2 mm thickness, with printed sheets of cardboard of about 180-400 g / m².

The machine is ideal for laminating finished folding cartons and displays (POS).

All rollers are coated and ball bearings. The main drive is infinitely variable. During breaks and other machine shutdowns running the paste unit, driven by a separate gear motor on and prevents the thickening of the glue. Massive construction of frame and side panels. The machine is not susceptible to faults and maintenance.

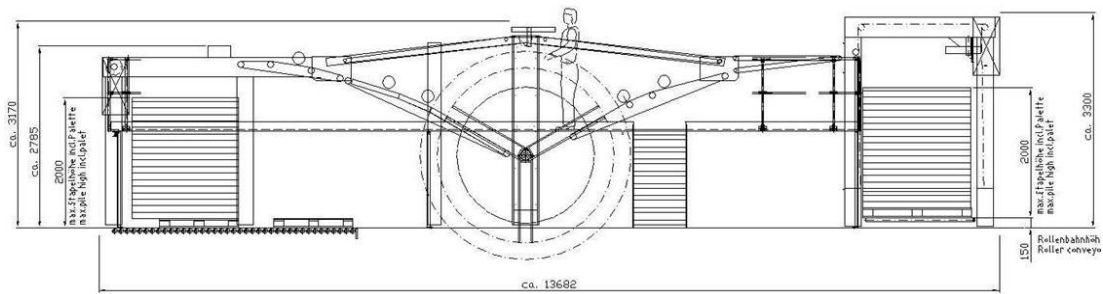


Available Options:

- pre-stacking unit for printed sheet feeder
- single-/ shingle sheet feeding of the print sheet into the laminating station
- push lay for printed sheet alignment
- Bundle Turnover (flip-flop) for stacking folded pre accumulated packets
- Pallet Logistics (roller conveyor -and / or modular belt system)

Return and Sorting Station, model SSR 7

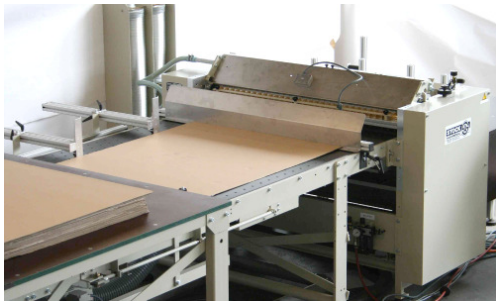
System for automatic sorting and use sheets that were stacked after the lamination packets against each folded on a pallet. Suitable for all common laminated sheet stock



Labelling machines

Stock Maschinenbau offers different versions to fit your requirements.

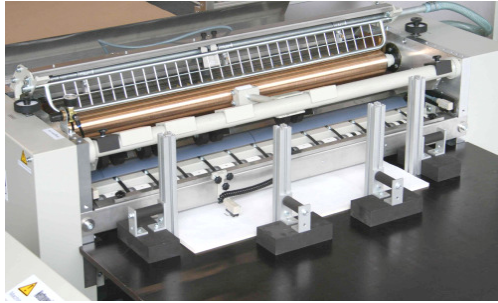
Manual and automatic labeling machines. Each corrugated box is suitable, regardless of size and weight for applying glued labels.



Manual labeller model LM-134ER / 1250 P



Each corrugated cardboard is suitable, regardless of size and weight, for labeling. Decisive for the placement and size of the labels attached are the overall visual impression of the box and the product-specific information, which increases the perceived value of the product by the purchaser. The simple, manual labeling LM-123/1250 P, both for labeling (labels), as can also be used for a variety of other manual working.



Consisting of:

- layboy table for manual labeling – single sheet
- gluing unit with automatic glue supply (P)
- sensor for sensing the glue-coated label
- labeling - putting the media format on the label
- manual system of Wellpappbogen or boxes
- nip
- layboy table for manual acceptance or delivery
- **Option:** automatic label feeder SAE /

Rotary cutter, model SRSS

In the development of the cross cutter, great emphasis was placed on a quality-oriented connection serious drive technology with functional engineering. For potential manufacturers and suppliers of single face corrugated, especially for sheet-to-sheet lamination, represents the investment and opportunity to counteract the lack of availability of sheet material and to develop the market further. Or simply expand the existing market potential through a further increase in production.



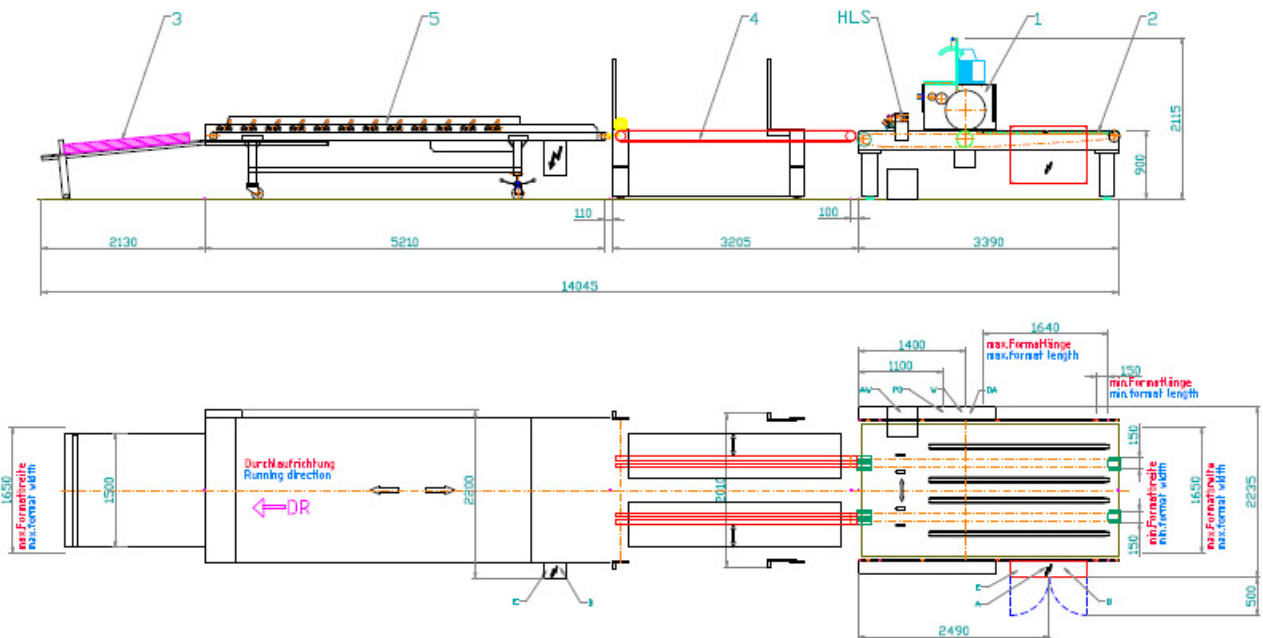
After feeding in the cross cutter by rollers, is carried out in the circular knife trim the station and possibly a means for cutting a blank separation. Suction belts take the shingle stream and transport them to the transverse knives. After cutting accepts another suction tape the sheets and transports them into the stacker unit. Overlap shingled the sheet arrive the automatic nonstop pile stacker. It represents an economical method of manufacturing sheets of single corrugated sheets, which are then laminated etc.

Technical specifications:

working width:	max. 1500mm / 1650mm / 1820mm / 2000 mm
cut-off length:	min. 500mm, max 1650mm, 2000 mm on request
cutting length tolerance:	+/- 1.0mm
web speed:	max. up to 150m / min
Electrical connection:	up to approx 40 kW, 400 Volts, 50 Hz, 3 phases
Materials:	single corrugated sheets, B, E, F and G flute cardboard up to 500 g / m ²

Pattern-Stencil-Gluing Machine, Model 716 SFAM

Suitable for full, pattern or strip gluing, in time, of different carriers such as open formats, punched blanks etc. made of corrugated and solid board, rigid foam boards etc. The pattern stencil-gluing machine has been designed to speed up the production cycle and to achieve a consistent high quality of gluing.
for repetition accuracy of gluing is



- sheet feeder by carrier chains, even for complicated blanks
- high register accuracy
- working width: 1.650mm
- solid, compact design
- short setup times: simple, fast cliché gluing
- fast, easy cleaning
- double stream operation possible
- simple operation, low maintenance - high efficiency
- sheet control: when missing sheet lowering the platen
- power: approx 4-20 blanks per minute possible - with manual system; depending on the display



easy adjustment and correction the register via the display, even during production



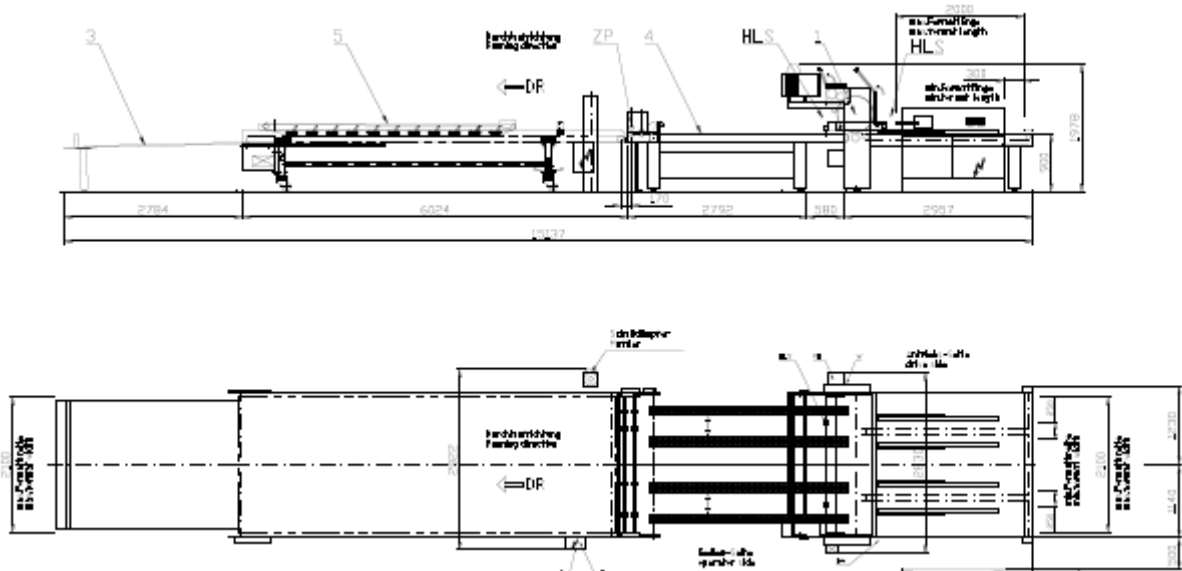
Technical specifications:

working width:	1,650 mm
output:	1 track approx. 4-20 blanks / min 2-track approx 8-40 blanks / min
Cutting thickness:	approx. 0.5 mm to 20 mm
Adhesive:	PVA dispersion glue (cold glue) approx 3.000-4.000mPa.s
Cleaning:	about 3-5 minutes
dimensions:	pattern stencil gluer: approx 4,0x2,2m; 1.800kg assembly station: approx 2,6x2,2m; 1.000kg pressure belt: approx 6,1x2,2m; 2.000kg
Voltage:	3x400Volt, 50Hz
Power demand:	4,5 / 1,5 kW

Pattern-Stencil-Gluing Machine, SFAM 2016

Suitable for full, pattern or strip gluing, in time, of different carriers such as open formats, punched blanks etc. made of corrugated and solid board, rigid foam boards etc. The pattern stencil-gluing machine has been designed to speed up the production cycle and to achieve a consistent high quality of gluing.

for repetition accuracy of gluing is



- sheet feeder by carrier chains, even for complicated blanks
- high register accuracy
- working width: 2,050mm
- solid, compact design
- short setup times: simple, fast cliché gluing
- fast, easy cleaning
- double stream operation possible
- simple operation, low maintenance - high efficiency
- sheet control: when missing sheet lowering the platen
- power: approx 4-20 blanks per minute possible - with manual system; depending on the display



easy adjustment and correction the register via the display, even during production



Technical specifications:

working width:	2,050 mm
output:	1 track approx. 4-20 blanks / min 2-track approx 8-40 blanks / min
Cutting thickness:	approx. 0.5 mm to 20 mm
Adhesive:	PVA dispersion glue (cold glue) approx 3.000-4.000mPa.s
Cleaning:	about 3-5 minutes
dimensions:	pattern stencil gluer: approx 4,0x2,4m; 2,200kgs assembly station: approx 2,6x2,2m; 1,400kgs pressure belt: approx 6,1x2,4m; 2,500kgs
Voltage:	3x400Volt, 50Hz
Power demand:	4,5 / 1,5 kW

Display assembly station, model SSM 202

Suitable for aligning, merging and bonding of blanks, including for manufacturing bases or larger cartons, which are composed of 2 parts. 2 other options are possible with low retooling.



Technical specifications:

working width:	min. 400 mm, max. 2,000 mm
width at bottom flap folding:	max. 1,900 mm
open blanks:	min. 400 mm, max. 2,000 mm
length for bottom flaps / folds:	max. 1,600 mm
output:	8 – 20 blanks per minute.
space requirement:	approx. 6 x 3.7 x 2 m (L x B x H), weight approx 2,000 kgs

Easel Mounter, Model SEM 7085

Designed for automatic gluing of back supports (bars) to the back of the display card.
Can be used for different materials: corrugated cardboard, cardboard, blanks, etc.

Consisting of:

- suction belt feeder: automatic creation of displays and webs
 - aligning station: to align the displays and walkways - Tolerances: +/- 1 mm approx
 - press roll: for pressing the glued with hot melt blanks
 - glue applicator: hot-melt system with PLC control and manually adjustable guns.
 - sizes for easel: width 100 - 600 mm
length 150 - 800 mm
 - sizes for display: width 150 - 700 mm
length approx. 290-850 mm
 - output: up to max. 2,500 bridges / hour - with 1 (or 2) persons
high accuracy
- high accuracy, short fast conversion
 - continuous format conditioning
 - webs and displays
 - glue Application with PLC control
 - operation with 1 person





Gluing Machine for blockgluing

model suitable for gluing and collating corrugated board of different numbers. Using a preset counter allows the order-related number of layers select. Depending on the preselected quantity runs exactly this number of sheets through the machine and is glued.



Quality Assurance

The quality assurance of the highest priority in our company - for the benefit of our customers. Therefore, the protection and monitoring of our quality standards essential component of all production processes. Secure by our competent staff, using the latest technology, efficient workflows and continuous checks and we increase the quality of our products.

Our product range

- sheet-to-sheet laminating machines
- reel-to-sheet / inline laminating machines
- labeling machines
- rotary sheeter-stacker machines
- gluing machines, as well as special machines