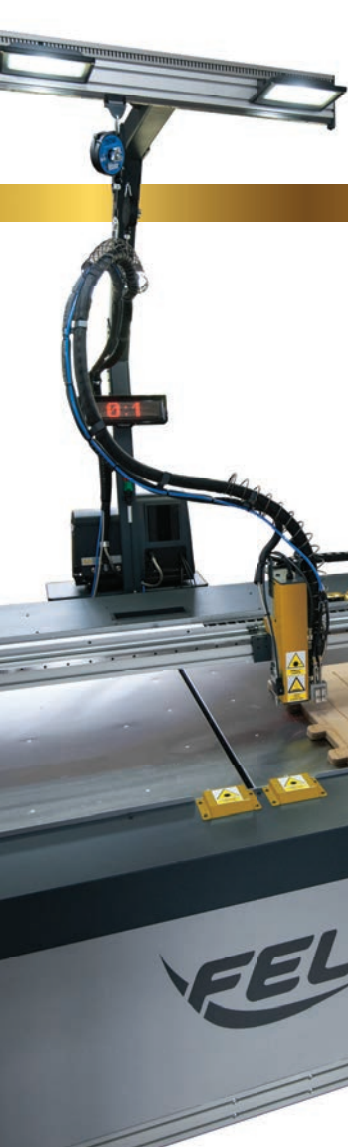


# FELIX

CNC GLUING PLOTTER



## FELIX GLUER - automatic CNC glueing plotter

FELIX GLUER from LYNX Poland is a state-of-the-art solution for precise dispensing of both hot melt and cold glues – a CNC controlled glue dispensing machine. The machine is universal and versatile, dedicated for the packaging and POS manufacturing industries. What sets it apart from standard gluers is the ability to simultaneously apply glue to a few elements that differ in shape. Glue is applied with high speed and precision; the amount of glue is identical along the entire application length. The work area of the machine is divided into two independent moving work shelves. This facilitates the application of the adhesive to two elements that vary in thickness, at the same time. The plotter makes production faster by determining work cycles for the operator and eliminating time waste typical to manual application of glue.

### HOW DOES THE PLOTTER WORK?

Prepare your design, mark with different colours paths for hot and cold glue. Place a pile of elements cardboard (or other) on the plotter. Start glue dispensing process. After all glue paths are applied to an element or a group of elements, the glue head moves to the standby position and remain there for the chosen amount of time, to give the operator a chance to remove element/elements covered with glue. The plotter automatically raise the pile of elements up by the thickness of the removed element/elements. The glue application process will start over again.

### WORK TABLE

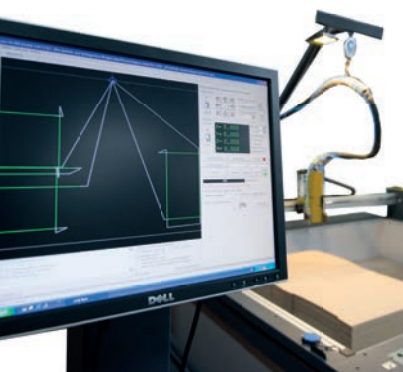
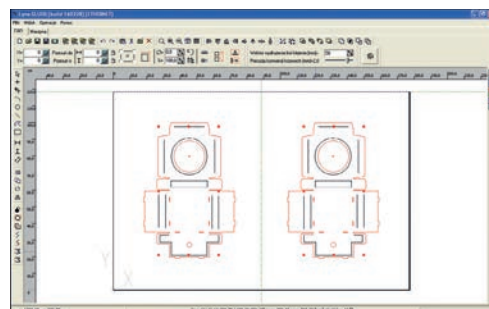
One, two or four independent, automatic, moving tables. Each of the tables can be divided into any number of glue dispensing zones. Since each section moves independently, you can simultaneously apply glue to two types of cardboard (or other material) that differ in thickness. Tables in one machine can work separately, or together, as one table.

## DESIGNED AND PRODUCED IN EUROPE

### CAD-CAM Software

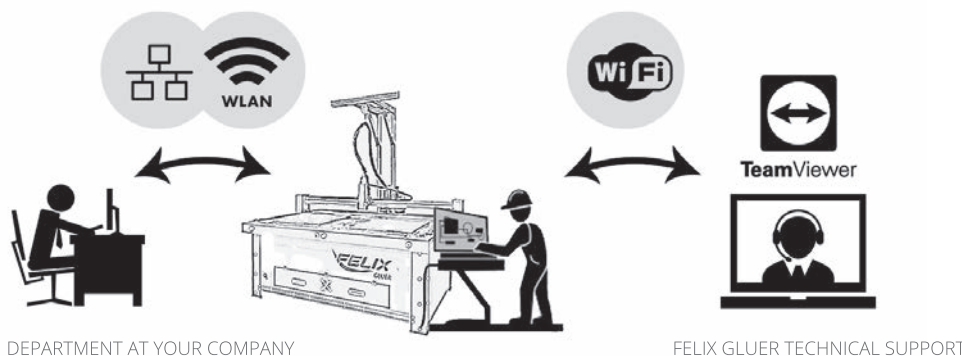
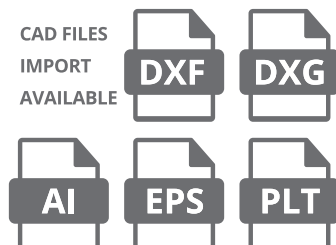
LYNX Gluer – it is an intuitive CAD-CAM software for designing glue patterns and machine steorage.

Both steps: preparation of the project and plotter control is done in the same software window. It makes machine operation fast and errorless. LYNX Gluer enables advanced object design facilitates an easy creation of user defined projects (from simple lines and geometric shapes, to more complex patterns) but also enables uploading projects saved in CAD formats (e.g. DXF) in external software, thus making life easier for companies who already use other software for determining glue application patterns.



### OUR SOFTWARE ADVANTAGES:

- import files from different CAD software
- installed on the Windows system
- access directly from your office
- easily change, move, delete or add any glue path
- unlimited number of presets
- unlimited number of saved jobs



DESIGN DEPARTMENT AT YOUR COMPANY

FELIX GLUER TECHNICAL SUPPORT

# FELIX

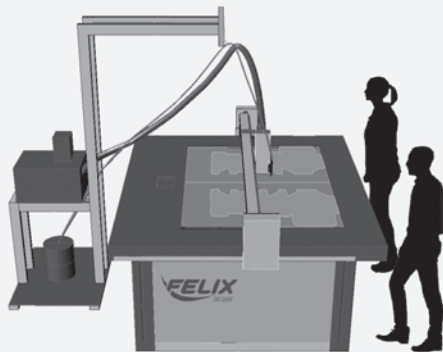
CNC GLUER

## Felix Gluer gives you SO MUCH MORE:

- fastest SETUP – it only takes a few seconds to start work
- connection via LAN or WiFi to your internal network
- send ready glue paths directly from the design office
- import DXF, DWG, AI, PLT files – FREE of CHARGE
- super fast glue application – up to 2,5m/s
- camera positioning system – PHOTOPATH
- best quality adhesion and cohesion with the FELIX GLUE



EQUIPPED WITH  
GLUING SYSTEMS:



### Felix Gluer SINGLE

available working table sizes

1650x1250mm

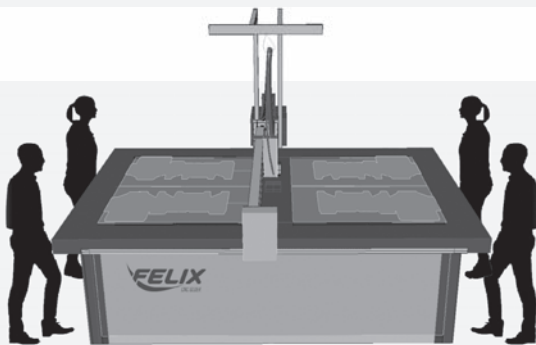
2000x1650mm

2200x1800mm

2500x1800mm

3000x2000mm

2 independent elevating working tables  
up to 4 glueing heads



### Felix Gluer COMBO

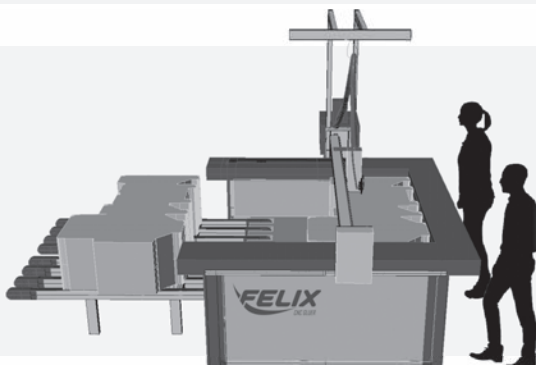
available working table sizes

2x(1650x1250mm)

2x(2000x1650mm)

2x(2200x1800mm)

2 independent elevating working tables  
up to 4 glueing heads



### Felix Gluer LINER

available working table sizes

1650x1250mm

2000x1650mm

1 independent elevating working table  
1 automatic feeding table  
up to 4 glueing heads



**GLUEING DISPLAYS WITH THE FELIX GLUER:**

- is even 4 x FASTER than hand glueing
- reduces glue consumption by at least 50%
- enables easy production cost calculation



**PRECISION AND FLEXIBILITY**

**Precision**  
The glue line is identical along its entire length, also on curves, which ensures the highest possible quality of the end-product.

**SPEED AND EFFICIENCY**

**Efficiency**  
The maximum cost reduction per one element.

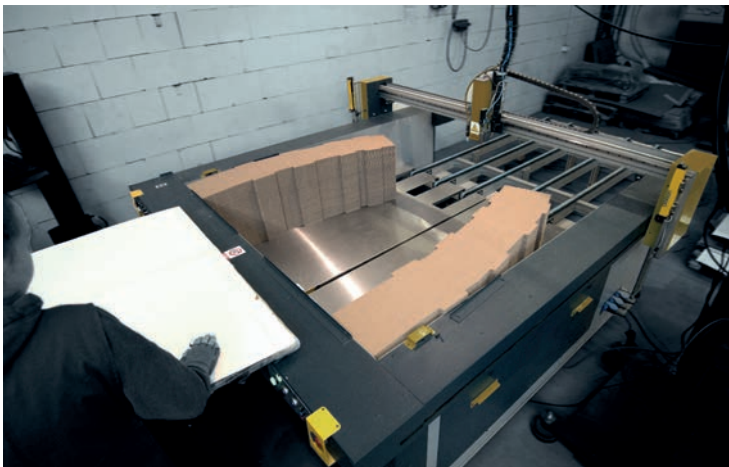
**Employees**  
Reduces the demand for staff

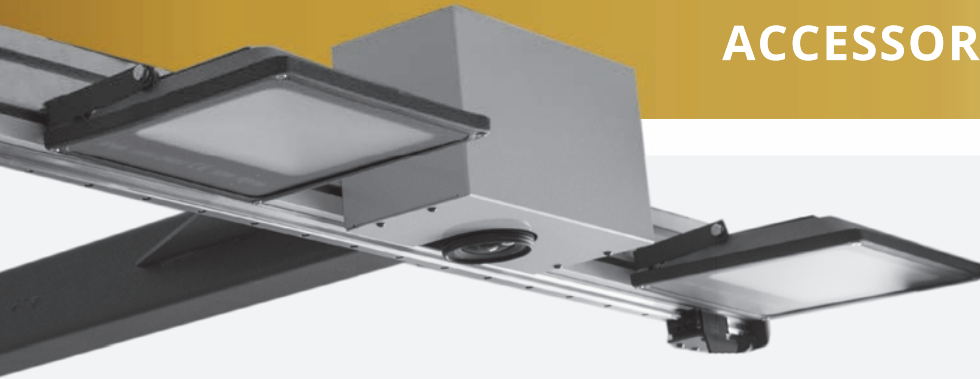
**Cost-effective**  
Great for high volume production – fast and precise gluing system that reduces the production cost of a single element

**FELIX plotters are used to automate gluing process of listed products:**

- POSm
- large cardboard boxes
- complicated cardboard boxes (eg with “windows”)
- personalized packaging elements
- cardboard pallets

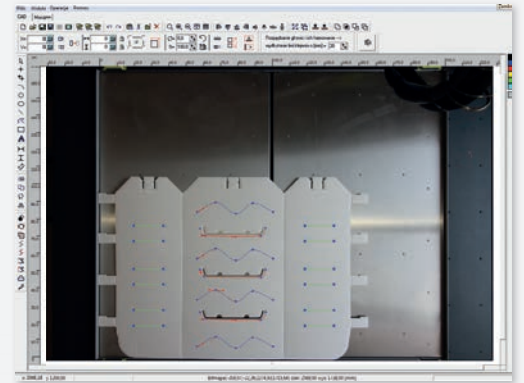
**Flexibility**  
Samples and small production runs are now possible and cost-effective – preparing glue application patterns takes but a moment, the production of a new element does not require retooling the plotter.





## PHOTOPATH camera system

Take a photo of the whole working table, then simply draw glue paths on the photo. Or use this option to set a position of a ready DXF/DWG/AI/EPS/PLT file over an element. EASY, FAST and SUPER PRECISELY.



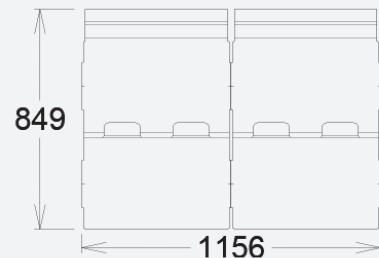
## LED elements counter

- Counter up shows the overall number of elements done on a shift/job
- Counter down shows operators a number of elements due in a current job



## LYNX GLUER – an additional software licence

Prepare projects in your design division and send them via internal network directly to the Felix plotter.



## LynxLOGI – the module that calculates and analyzes the glueing costs.

- Calculate exact glue usage per each element
- Control production time per one element
- Precisely calculate your profit
- Analyze your production



## TIMER

Program working hours for the machine, to have the hot melt melted in first minutes of the shift.

## START PEDAL

The operator can start a job manually, by pressing the start pedal.



# LYNX

DESIGN • INNOVATION • EXPERIENCE

FELIX GLUER is a brand of the LYNX Poland Sp. z o.o.

[www.felix-gluer.com](http://www.felix-gluer.com)

For any further questions please don't hesitate to contact us:

## LYNX

LYNX Poland Sp. z o.o.

Office:

ul. Sikorskiego 119

Klaudyn 05-080 Izabelin

POLAND

phone/fax +48 22 825 61 22

phone/fax +48 22 825 92 66

[office@felix-gluer.com](mailto:office@felix-gluer.com)

[www.felix-gluer.com](http://www.felix-gluer.com)

+48 501 778 896

LYNX Poland worldwide partners



Produced in EU